

LEGEND

New Jersey Major Roads

County Boundary

Municipal Boundary

Census Block Groups

1 Dot = 25 Persons

Persons below poverty level

Percent of Municipal Population in Poverty

0 - 4.6%

4.7% - 9.7%

9.8% - 11.8%

11.9% - 16.5%

16.6% - 48.9%

NJ Average 9.7%

ROAD SYMBOLS

Garden State Parkway

New Jersey Turnpike

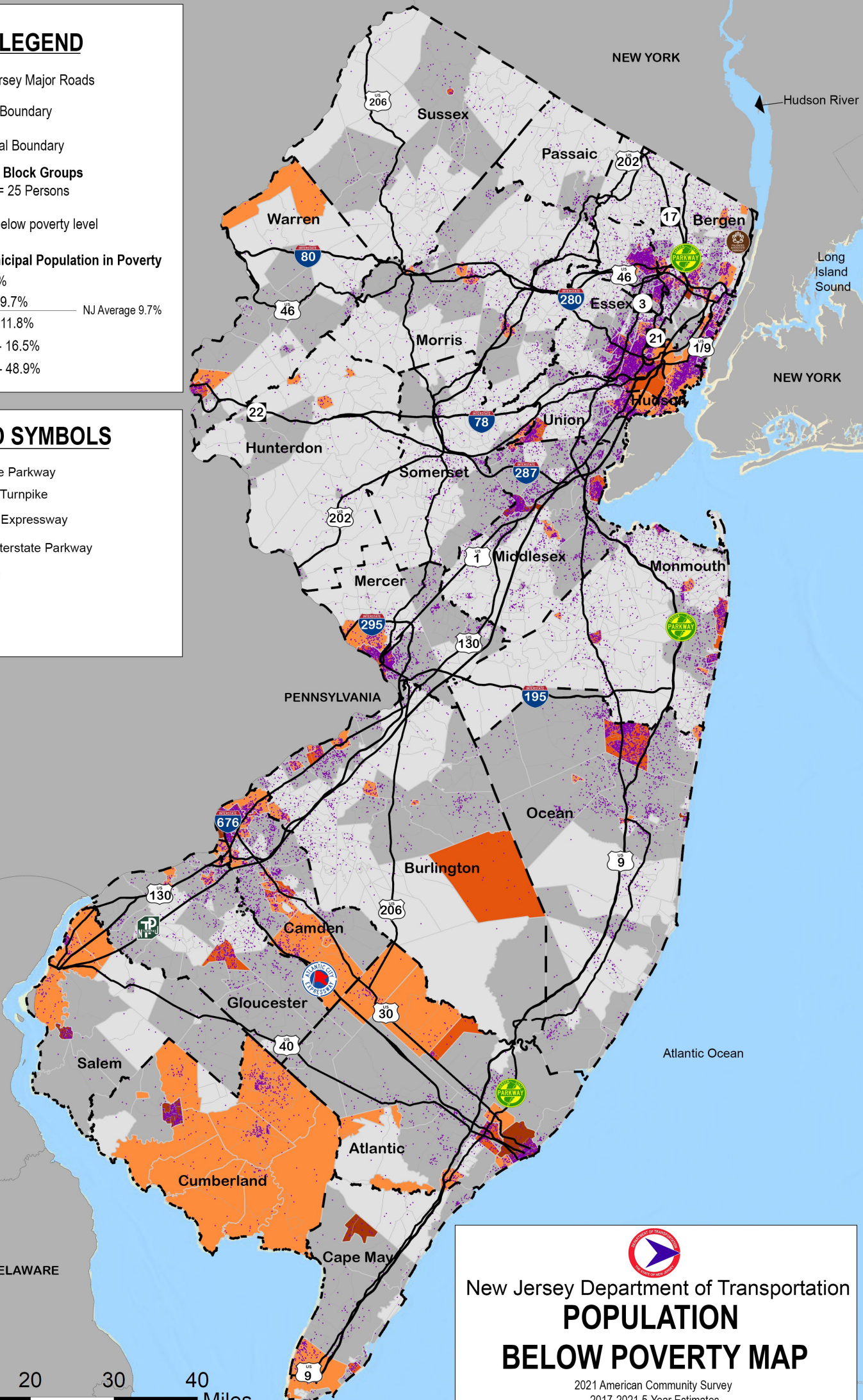
Atlantic City Expressway


Palisades Interstate Parkway

US Highway

Interstate

State Route





New Jersey Department of Transportation

POPULATION BELOW POVERTY MAP

2021 American Community Survey
2017-2021 5-Year Estimates