



# Delaware River Scenic Byway

## A Historic River Valley



## Welcome

## to the Delaware River Scenic Byway



Lamberville-Raven Rock Pedestrian Bridge

### Ribbons of Heritage

River, canal, railroad and roadway - the parallel ribbons of heritage in the historic Delaware River Valley - have played a transforming role in American history. Evidence can be seen in the historic towns and scenic landscapes along the 33-mile Delaware River Scenic Byway in New Jersey.

The formative power of the Delaware River shaped the cliffs and lowlands of the Valley, influenced the settlement patterns of our

historic river towns, and even played a critical role in America's Revolutionary War, memorialized at Washington Crossing State Park. The Byway follows closely the still intact 19th century Delaware and Raritan (D&R) Canal that once powered the industrial revolution but now serves as both a recreational venue and water supply for 1.5 million people and is preserved as a State Park.

The Delaware River Scenic Byway on Route 29 is a gateway to the discovery of our nation's birth and development. The story is revealed along riverbanks and canal towpaths, at historic mills and farms, in quaint historic towns and in the Capital of one of the original thirteen colonies. With stops at Trenton, Washington's Crossing, Lambertville, Stockton and Frenchtown, visitors access historic enclaves where the tide of the American Revolution turned to favor General George Washington and the quest for independence.

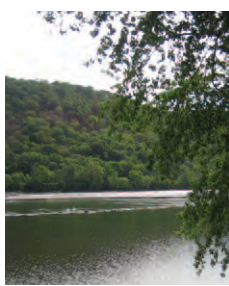


The D&R Canal, Washington's Crossing, and the Delaware River

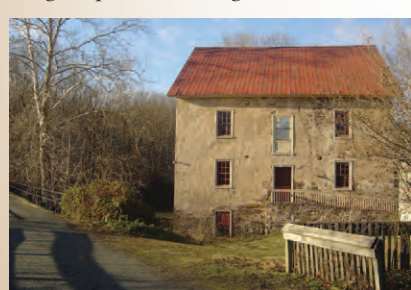
The Byway parallels the restored D&R Canal and an extensive walking and biking trail. The Byway's historic and natural setting offers visitors firsthand experience of historic places along with plenty of opportunities for outdoor recreation—hiking, biking, boating and fishing.

### Sights and Sounds

Begin the journey at Trenton's South River Walk Park, where centuries of history are recorded in stone and designed into the park's features. Stand where General Washington and his Revolutionary Army crossed the icy Delaware River on an early Christmas morning at Washington Crossing State Park. Visit the D&R Canal State Park and its 70 miles of recreational paths, a 19th century icon. Go back in time to the 1900s at Howell Living Farm and experience life on a working farm firsthand. Walk among Lambertville's historic buildings of shops and restaurants, and visit New Jersey's last remaining shad fishery, which is open in the spring. Three miles north is the historic Prallville Mills in Stockton, an 18th and 19th century mill complex that used hydropower to process grains, lumber and oils. Visit Bull's Island Recreational Area on the D&R Canal. Walk high above the Delaware River on a Roebbing-designed pedestrian bridge and see the intake that feeds the canal from the



Delaware River, Lambertville



Prallville Mills, Stockton

the King Head Cliffs towards Frenchtown. Frenchtown's quaint and historic streets provide the perfect ending to your journey and have much to offer such as local food, shopping, galleries, antique stores and lodging.

### Experience History Firsthand

Explore the restored Prallville Mills and Visitors Center in Stockton. Watch the reenactment of Washington's Crossing of the Delaware on Christmas Day. Participate in Patriots Week events held the following week. Visit the NJ State House – the nation's 2nd oldest state capitol in continuous use. Experience what life was like in the 18th century at the historic Howell Living History Farm. Stay at the Stockton Inn, which has been welcoming guests for over 300 years.

### Take in Local Culture



Lambertville Flea Market

Find your favorite childhood toy at the Lambertville Flea Market.

See local art, taste local fare and enjoy live entertainment at the annual Shad Fest in Lambertville.

Visit Washington Crossing's open-air theater during the summer.

Explore the Delaware River communities of New Hope, Lambertville, and Frenchtown, and enjoy the many art galleries and antique shops.

### Enjoy Outdoor Recreation

Fish, hike or just observe the scenery in the Wickecheoke Creek Greenway Preserve.

Launch your canoe or kayak into the Delaware River and Delaware and Raritan Canal from any of the free boat launches along the Byway, which are open from sunrise to sunset.



Delaware Sojourn

Have your family picnic at Bull's Island Recreational Area, where picnic tables and charcoal grills are provided.

Seize the opportunity for kayaking in the "whitewater" conditions of Scudders Falls.

Go tubing down the Delaware River Water Trail from Frenchtown and enjoy the outstanding scenery of this section of the Delaware River, part of the National Wild and Scenic River System.

Spend the day spotting some of the 160 species of birds that have been observed within the D&R Canal State Park.

Park your car in Lambertville and go cycling year-round along the bicycle trail next to the Delaware River and Canal for 16 miles north to Frenchtown or 11 miles south to Trenton.

### Places to Visit

#### Washington Crossing State Park, Titusville

This park is located at the site of General George Washington's historic 1776 crossing of the Delaware River. The park was originally preserved for its historical significance but has expanded to include extensive trails and a nature center along with a museum and open air theatre. Arrangements can be made for group camping.



The Johnson Ferry House, Washington Crossing



Old Barracks Museum

#### Old Barracks Museum, Trenton

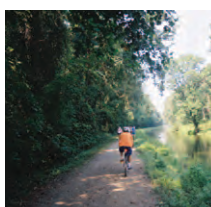
Built in 1758 this State and National Historic Landmark was built by the Colony of New Jersey to house troops during the French and Indian War. Today, it serves as an educational center for early American history and stands as the last remaining structure of its kind.

#### South Riverwalk Park, Trenton

This 6.5 acre park displays the history of Trenton and its connection to the Delaware River. The Park features five arches that mark the eras of the city from pre-revolutionary through the Industrial Revolution to the modern era.



South River Walk Park



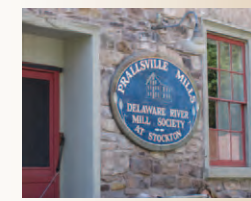
Cycling along D&R Canal State Park Towpath

#### D&R Canal State Park

The D&R Canal was begun in 1830 and was built across the "waist" of the state to carry freight between Philadelphia and New York. Today, the canal appears on the National Register of Historic Places and has been converted into the 70-mile D&R Canal State Park.

#### Prallville Mills, Stockton

Prallville Mills is a significant surviving 18th, 19th and 20th Century American village industrial complex. The restored site hosts cultural and environmental events as well as a visitor center.



Prallville Mills



The John Holcombe House

#### Holcombe-Jimison Farmstead Museum, Lambertville

The Holcombe-Jimison Farmstead Museum, housed in a three-story 19th century bank barn, is dedicated to the preservation of Hunterdon County's 18th, 19th and early 20th century cultural and agricultural heritage.

## For further information:

[www.delawareriverscenicbyway.org](http://www.delawareriverscenicbyway.org)  
[www.byways.org](http://www.byways.org)



Frenchtown Bridge

### Acknowledgements



The Delaware River Scenic Byway was designated as a National Scenic Byway by the Federal Highway Administration on October 16, 2009. The Byway received state designation under the New Jersey Scenic Byways Program on June 26, 1996. The Delaware River Greenway Partnership hosts the Delaware River Scenic Byway Committee with wide representation from local communities.

This brochure has been funded by the New Jersey Department of Transportation and the Federal Highway Administration, with funding for printing from the National Park Service Wild & Scenic Rivers Program.



# Delaware River Scenic Byway

