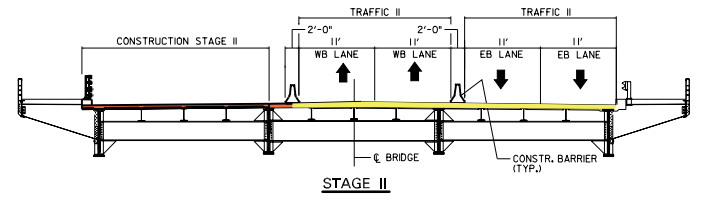
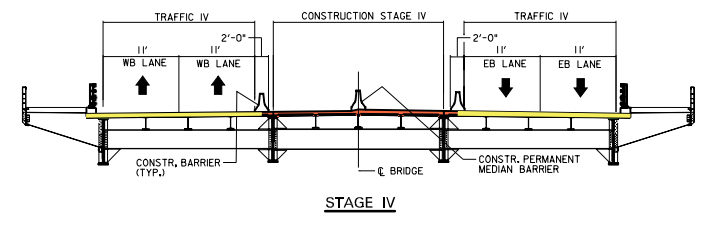
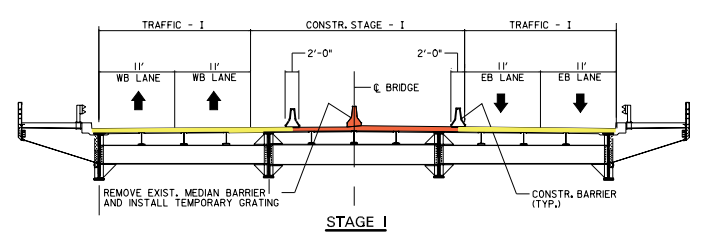
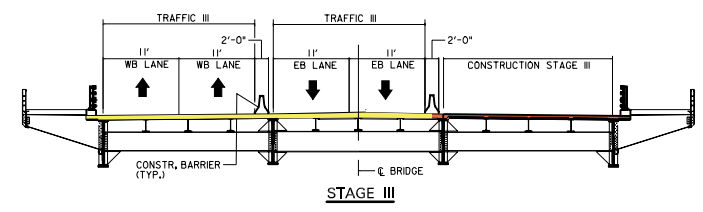
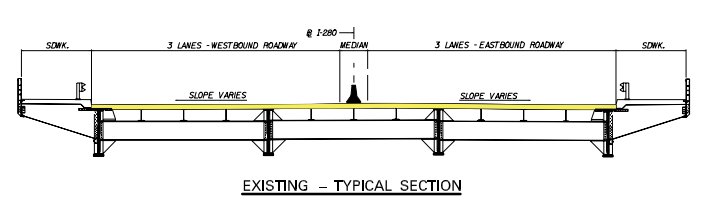
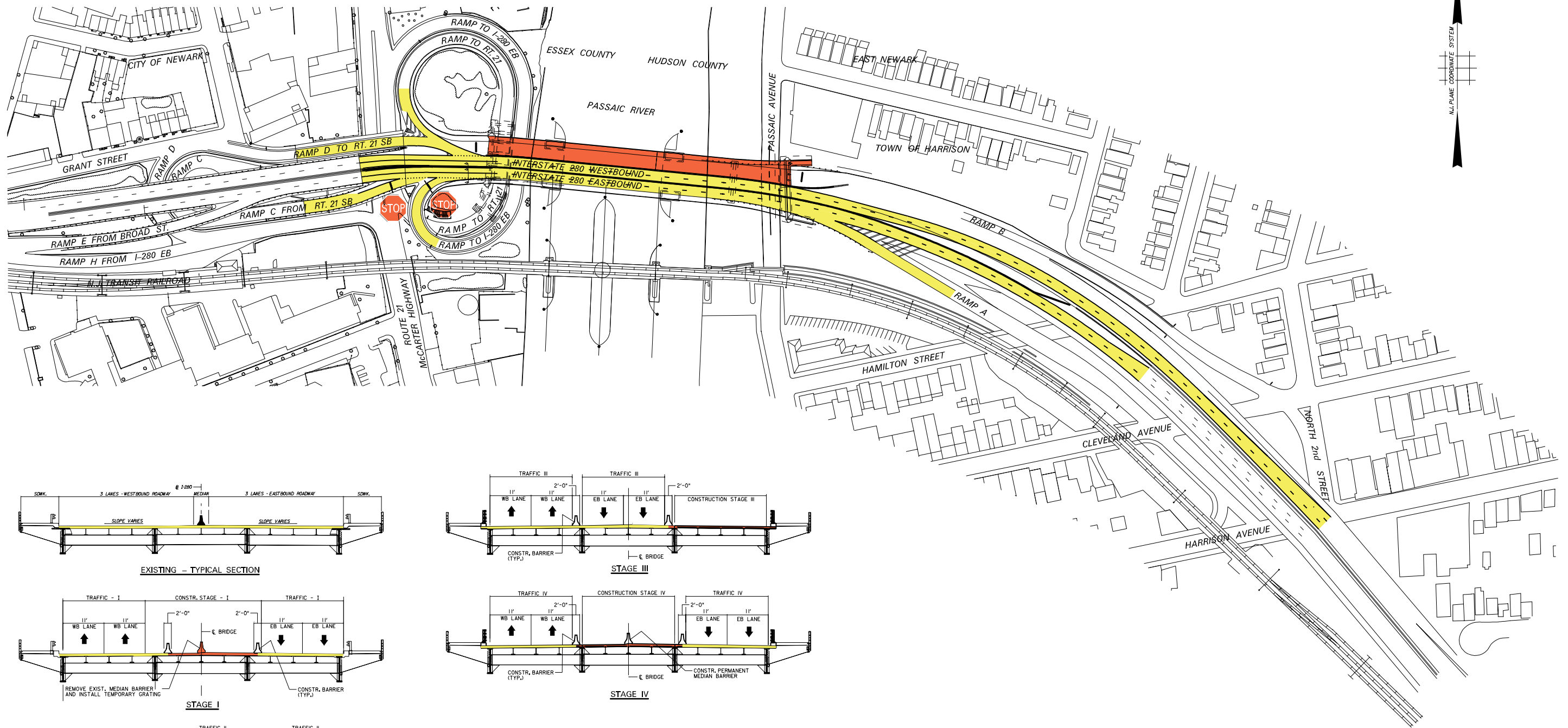


CITY OF NEWARK
COUNTY OF ESSEX


BOROUGH OF EAST NEWARK
TOWN OF HARRISON
COUNTY OF HUDSON



BRIDGE CONSTRUCTION SECTIONS
(LOOKING EAST)

CONSTRUCTION STAGING PLAN

STATE OF NEW JERSEY
DEPARTMENT OF TRANSPORTATION
**STICKEL MEMORIAL
BRIDGE REHABILITATION**
CITY OF NEWARK, COUNTY OF ESSEX &
BOROUGH OF EAST NEWARK, TOWN OF HARRISON, COUNTY OF HUDSON



- NOTES:
- 2 LANES WILL BE MAINTAINED ON I-280 IN EACH DIRECTION.
 - ALL RAMP ARE OPEN, EXCEPT FOR RAMP TO I-280 WB FROM CLEVELAND AVE.

