



www.state.nj.us/transportation/works/studies/rt295

Community Advisory Committee Meeting #5

I-295/I-76/NJ 42 Direct Connection

PRESENTATION OUTLINE

Current Project Status - Ileana Ivanciu

Next Steps – Craig Johnson

Your Role – Mike Russo

March 23, 2004

**Presented by NJ Department of
Transportation**





PROJECT GOALS

www.state.nj.us/transportation/works/studies/rt295

- **Build credibility**
 - 🕒 **Present facts**
 - 🕒 **Accept mistakes**
 - 🕒 **Show impacts clearly**
 - 🕒 **Be honest**
 - 🕒 **Follow through with commitments**
- **Understand and address community quality of life issues**
- **Meet permit requirements**
- **Improve safety/congestion**



**I-295/I-76/Route 42
Direct Connection**
Camden and Gloucester Counties

PROJECT LOCATION AND CONSTRAINTS

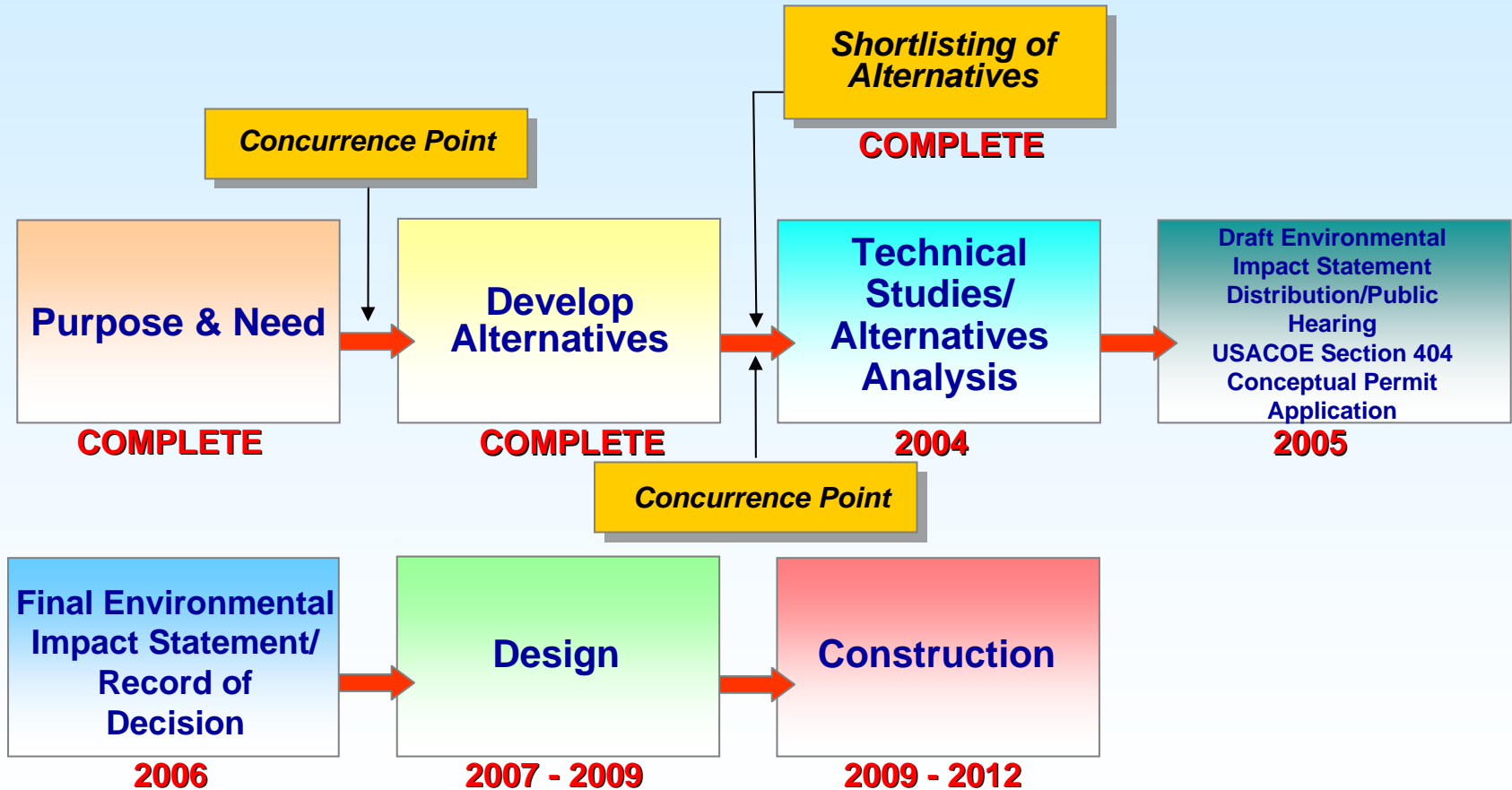
www.state.nj.us/transportation/works/studies/rt295





www.state.nj.us/transportation/works/studies/rt295

PROJECT MILESTONES





PURPOSE & NEED

www.state.nj.us/transportation/works/studies/rt295

- **Improve traffic safety**
 - 🌀 **Accident rates – over 4 times the statewide average**

- **Reduce congestion**
 - 🌀 **Identified by NJDOT as one of the 10 most congested locations in NJ**

- **Meet driver's expectations**
 - 🌀 **No direct connection for I-295 thru-traffic**





ALTERNATIVES

www.state.nj.us/transportation/works/studies/rt295

- **26 alternatives were developed to provide a direct connection for I-295 through traffic. Features common to all are:**
- **3 lanes on NB & SB I-295**
 - ☉ **Full right and left shoulders**
 - ☉ **2 lane ramps**
 - ☉ **I-76/Route 42 express/local configuration removed**
 - ☉ **I-295 speed limit: 55 MPH**
 - ☉ **Ramps speed limit: 40 MPH**





www.state.nj.us/transportation/works/studies/rt295

SELECTION CRITERIA

- **Constructibility**
- **Maintainability**
- **Compliance with Standard Design Criteria**
- **Comparison of Order of Magnitude Construction Cost**
- **Right-of-way Acquisition**
- **Wetlands Preservation**
- **Noise**
- **Air Quality**
- **Socioeconomic Conditions**
- **Environmental Justice**
- **Archaeological Resources**
- **Historic Resources**
- **Potential Hazardous/Contaminated Sites**





ALTERNATIVES SCREENING PROCESS

www.state.nj.us/transportation/works/studies/rt295

➤ **Multidisciplinary Teams**

- ☉ **Engineers**
- ☉ **Planners**
- ☉ **Scientists**
- ☉ **Community Representatives**
 - **Local Officials**
 - **General Public**

➤ **Multiple Workshops**

- ☉ **Fill out matrix**
- ☉ **Compare alternatives**
- ☉ **Recommend shortlist for further study**

➤ **Public Information Meeting**





SUMMARY OF SHORTLISTING RECOMMENDATIONS

www.state.nj.us/transportation/works/studies/rt295

- **Project Team – Alternatives D, K, G2**
- **NJDOT Core Group – Alternatives D, K**
- **Agency Coordination Meeting – Alternatives D, D1, K, G2 and H1**
- **CAC – Alternatives D, K**
- **Partnering Session – Alternatives D, D1, K, G2**
- **Public Information Meeting -**

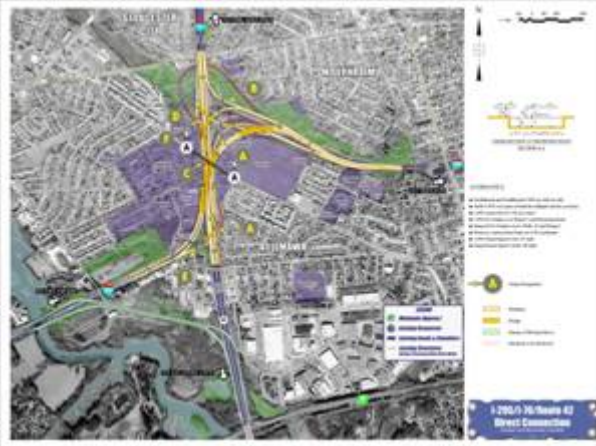


I-295/I-76/Route 42 Direct Connection

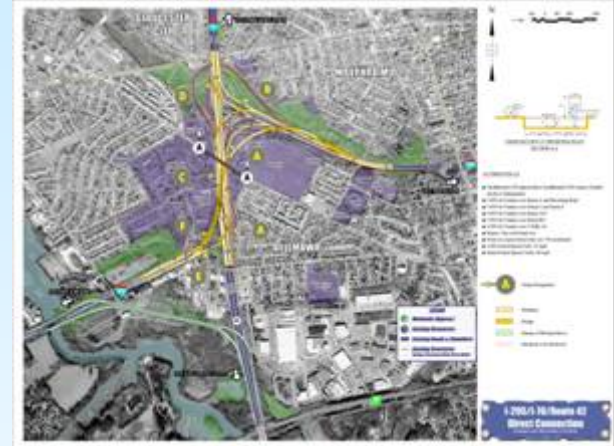
Camden and Gloucester Counties

www.state.nj.us/transportation/works/studies/rt295

ALTERNATIVES CONSIDERED FOR FURTHER STUDY



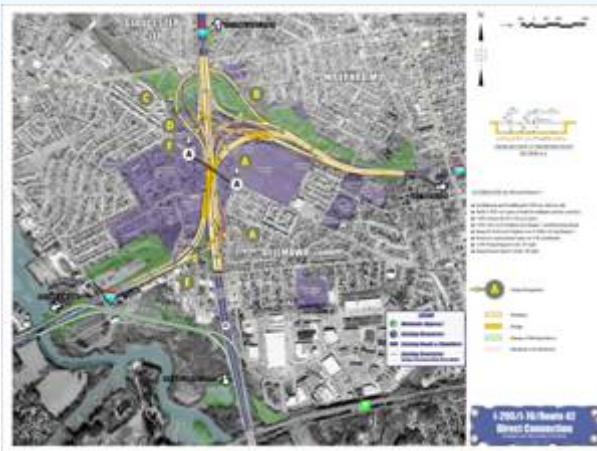
Alternative D



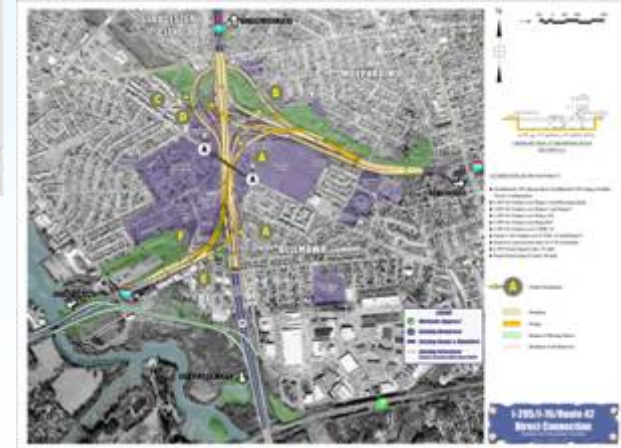
Alternative G2



Alternative K



Alternative D1



Alternative H1



I-295/I-76/Route 42 Direct Connection

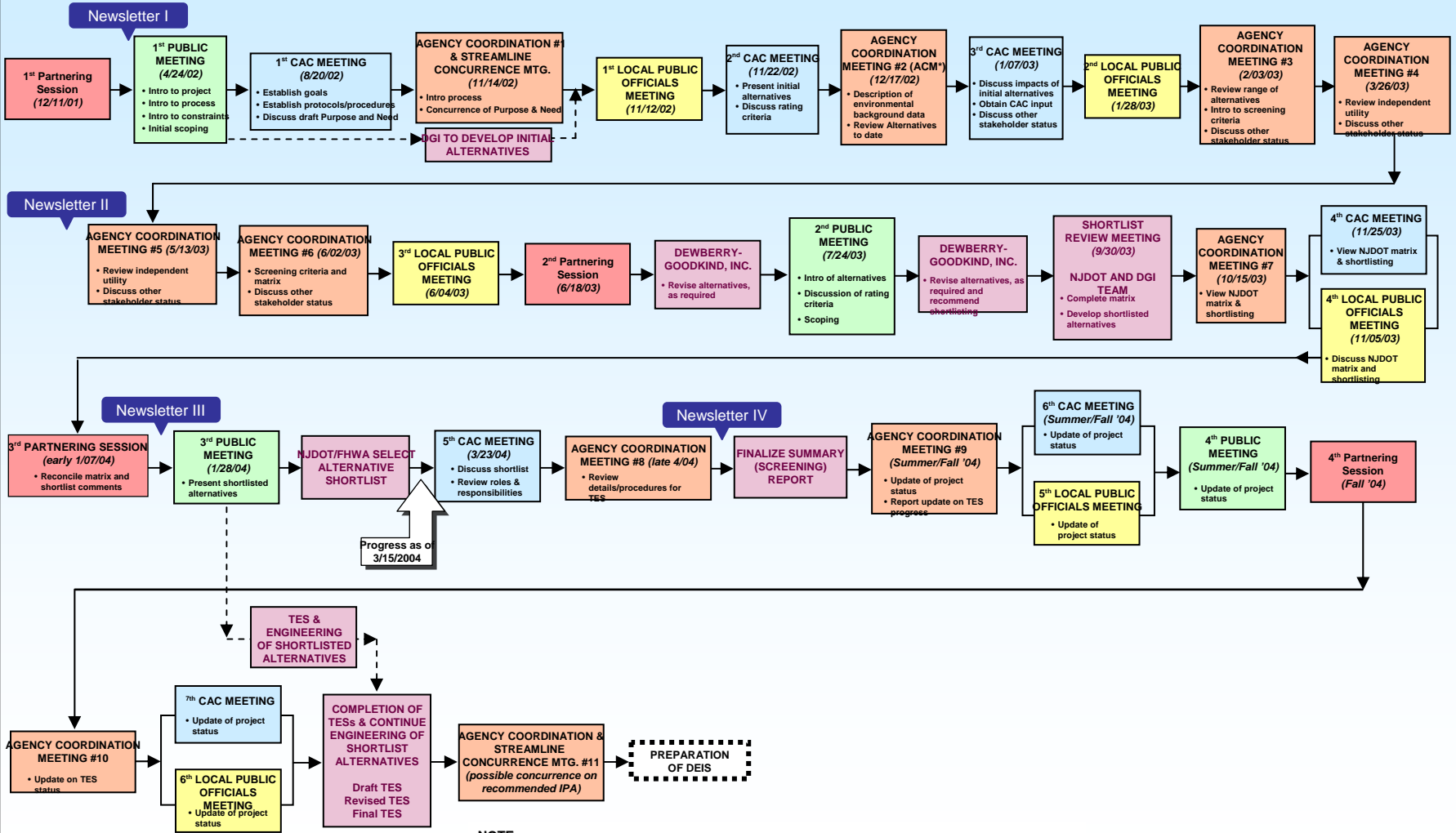
Camden and Gloucester Counties

PROJECT FLOW CHART

1st Public Meeting to Completion of TES's

Revised 3/15/04

www.state.nj.us/transportation/works/studies/rt295



NOTE

- Agency Coordination Meetings (ACM) will be added whenever necessary, throughout the process.
- Newsletter to be prepared quarterly
- PIC's to be held bi-annually.





www.state.nj.us/transportation/works/studies/rt295

PROJECT PROCESS

- **NEPA Process – The National Environmental Policy Act of 1969**
 - ⦿ **Our basic national charter for protecting the environment.**
 - ⦿ **Applies to all Federal agencies and their actions.**
 - ⦿ **Federal Agency – Federal Highway Administration**





www.state.nj.us/transportation/works/studies/rt295

EIS FUNCTION

- **Environmental Impact Statement (EIS) has two major functions:**
 - 🕒 **Evaluate Social Economic and Environmental (SEE) impacts.**
 - 🕒 **It is a public disclosure and decision-making document.**





TECHNICAL ENVIRONMENTAL STUDIES

www.state.nj.us/transportation/works/studies/rt295

- **Refine Alignments (Vertical/Horizontal) For the Recommended Alternatives**
- **Identify in Detail Existing Environmental Conditions**
- **Evaluate Impacts of Selected Alternatives**
- **Develop Strategies to Avoid, Minimize of Mitigate Impacts**
- **Present results to all Stakeholders**
- **Solicit Comments/Input**
- **Finalize Study**





TECHNICAL ENVIRONMENTAL STUDIES

www.state.nj.us/transportation/works/studies/rt295

- **Socio-Economics**
- **Environmental Justice**
- **Cultural Resources**
 - ☉ **Historical Architecture**
 - ☉ **Archaeology**
- **Air Quality**
- **Noise**
- **Natural Resources**
 - ☉ **Wetlands**
 - ☉ **Floodplains**
 - ☉ **T&E**
- **Hazardous Waste**



I-295/I-76/Route 42 Direct Connection

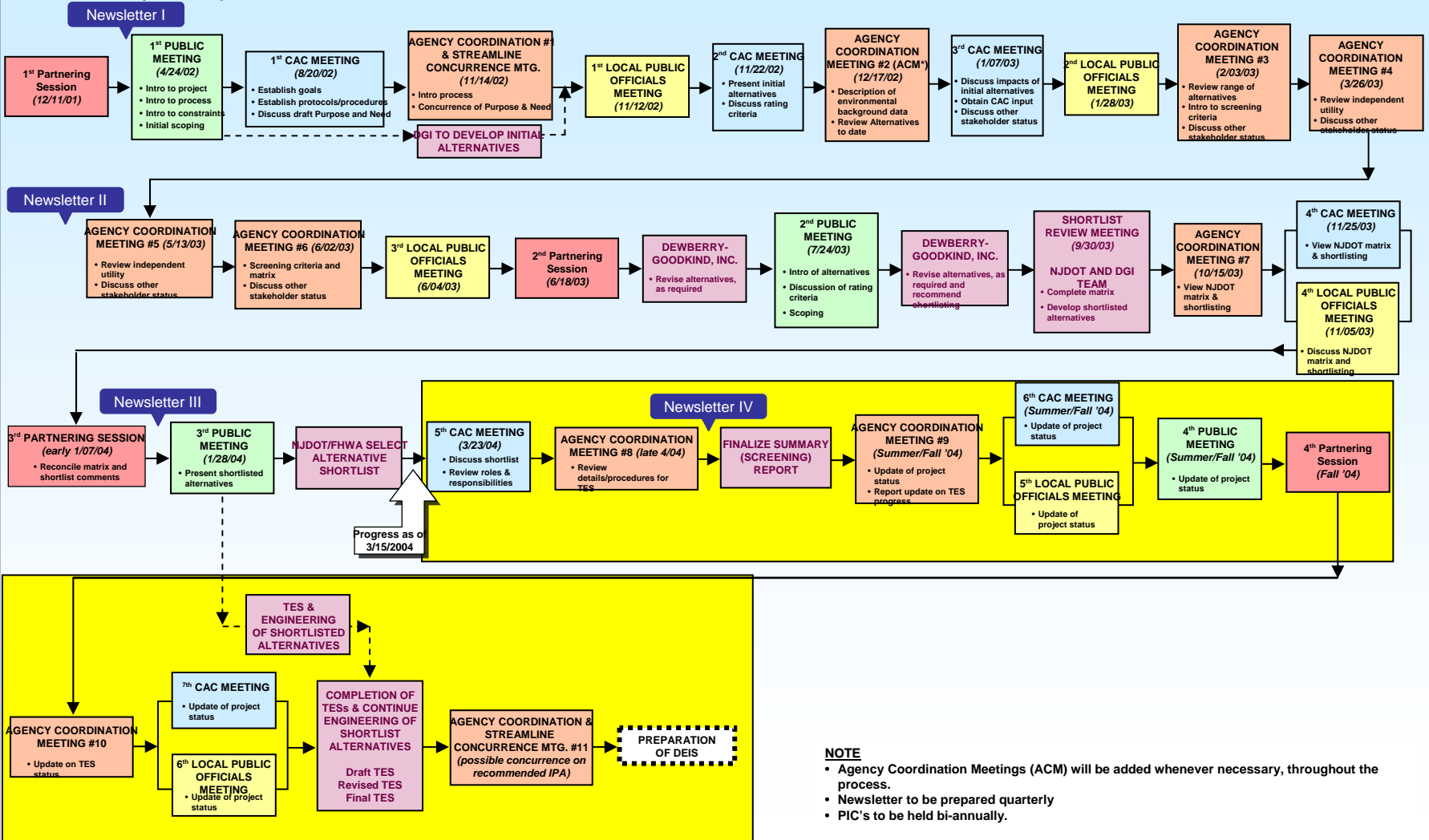
Camden and Gloucester Counties

PROJECT FLOW CHART

1st Public Meeting to Completion of TES's

Revised 3/15/04

www.state.nj.us/transportation/works/studies/rt295



NOTE

- Agency Coordination Meetings (ACM) will be added whenever necessary, throughout the process.
- Newsletter to be prepared quarterly
- PIC's to be held bi-annually.



I-295/I-76/Route 42 Direct Connection

Camden and Gloucester Counties

LANDUSE

www.state.nj.us/transportation/works/studies/rt295



Land Use

Legend

- Commercial
- Industrial
- Recreation/Athletic Fields
- Public
- Vacant
- Cemetery
- Residential
- Proposed Development
- Project Screening Study Area Boundary
- Municipal Boundary



Source: NJDEP Bureau of Geographic Information & Analysis, 1995-1997
Dresher Robin Site Reconnaissance



**I-295/I-76/Route 42
Direct Connection**
Camden and Gloucester Counties

COMMUNITY FACILITIES

www.state.nj.us/transportation/works/studies/rt295



Source: NJDEP Bureau of Geographic Information & Analysis, 1995-1997
Drexler Robin Site Reconnaissance


Community Facilities

Legend

- 1- State Police Complex
- 2- Annunciation Church and Elementary School
- 3- Bell Oaks School
- 4- Bellmawr Baptist Church
- 5- Bellmawr Park School
- 6- Bellmawr Veterans of Foreign War
- 7- Bellmawr Park Volunteer Fire Company
- 8- Mt. Ephraim Sewage Treatment Facility
- 9- Anderson Avenue Recreation Area
- 10- Memorial Park
- 11- Bellmawr Little League Ballfield
- 12- Mt. Ephraim Girl's Softball Fields
- 13- Scott E. Murella Playground
- 14- Shining Star Park
- 15- New St. Mary's Cemetery
- 16- Resurrection of Christ Cemetery
- 17- Bellmawr Park Community Center
- 18- Playground
- Project Screening Study Area Boundary
- Municipal Boundary

0 1,000 2,000 3,000 4,000 Feet



I-295/I-76/Route 42 Direct Connection

Camden and Gloucester Counties

POVERTY LEVEL

www.state.nj.us/transportation/works/studies/rt295



Poverty Level

Legend

- Project Screening Study Area Boundary
- 1990 Census Tracts
- Percentage Below the Poverty Level**
 - 0.00 - 4.99 Percent
 - 5.00 - 9.99 Percent
 - 10.00 - 15.00 Percent
- Municipal Boundary

0 1,000 2,000 3,000 4,000 Feet

Source: NJDEP Bureau of Geographic Information & Analysis, 1990-1997
Dredner Robin Site Reconnaissance
U.S. Bureau of the Census 2000



MINORITY POPULATIONS

www.state.nj.us/tr



Minority Populations

- Legend**
- Project Screening Study Area Boundary
 - 2000 Census Tracts
 - Block 3012- Block Groups**
 - Less than 10%
 - 10-30%
 - Municipal Boundary



Source: NJDEP Bureau of Geographic Information & Analysis, 1995-1997
Ordnance Ratio: Site Reconnaissance
U.S. Bureau of the Census, 2000



I-295/I-76/Route 42 Direct Connection

Camden and Gloucester Counties

www.state.nj.us/transportation/works/studies/rt295

RECREATION



- Legend**
- Publicly Owned Recreational Facility
 - Project Screening Study Area Boundary
 - Municipal Boundary



Source: NJDEP Bureau of Geographic Information & Analysis, 1995-1997
Dresdner Robin Site Reconnaissance



**I-295/I-76/Route 42
Direct Connection**
Camden and Gloucester Counties

CULTURAL RESOURCES

www.state.nj.us/transportation/works/studies/rt295



Cultural Resources

- Legend**
- High Historic
 - Moderate Historic
 - High Prehistoric
 - Moderate Prehistoric
 - Project Screening Study Area Boundary
 - Municipal Boundary



Source: A.D. Marble and NJCEP Bureau of Geographic Information & Analysis, 1995-1997



**I-295/I-76/Route 42
Direct Connection**
Camden and Gloucester Counties



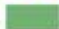


NOISE SENSITIVE LAND USE

www.state.nj.us/transportation/works/studies/rt295



Noise Sensitive Land Use

Legend

-  Project Screening Study Area Boundary
-  B- Residential, schools, places of worship, and recreational areas
-  C- Commercial/Industrial
-  E- Interior churches, schools and auditoriums, Bellmawr Baptist Church, Bellmawr Park School, and Bell Oaks School
-  Municipal Boundary

0 1,000 2,000 3,000 4,000 Feet

Source: Paul Carpenter Associates, Inc. and NJDEP Bureau of Geographic Information & Analysis, 1995-1997



I-295/I-76/Route 42 Direct Connection

Camden and Gloucester Counties

WETLANDS

www.state.nj.us/transportation/works/studies/rt295



Wetlands

Legend

- Herbaceous
- Scrub/Shrub
- Mixed Forest
- Tidal Marshes
- 50 Foot Wetlands Buffer
- Project Screening Study Area Boundary
- Municipal Boundary

Source: NJDEP Bureau of Geographic Information & Analysis, 1985-1997
Dredger Basin Site Reconnaissance



POTENTIAL HAZARDOUS SITES

www.state.nj.us/transportation/works/studies/rt295



Potential Hazardous Sites

- Legend**
- Potential Hazardous Sites
 - Project Screening Study Area Boundary
 - Municipal Boundary



Source: NJDEP Bureau of Geographic Information & Analysis, 1995-1997
EOR Report and Site Reconnaissance

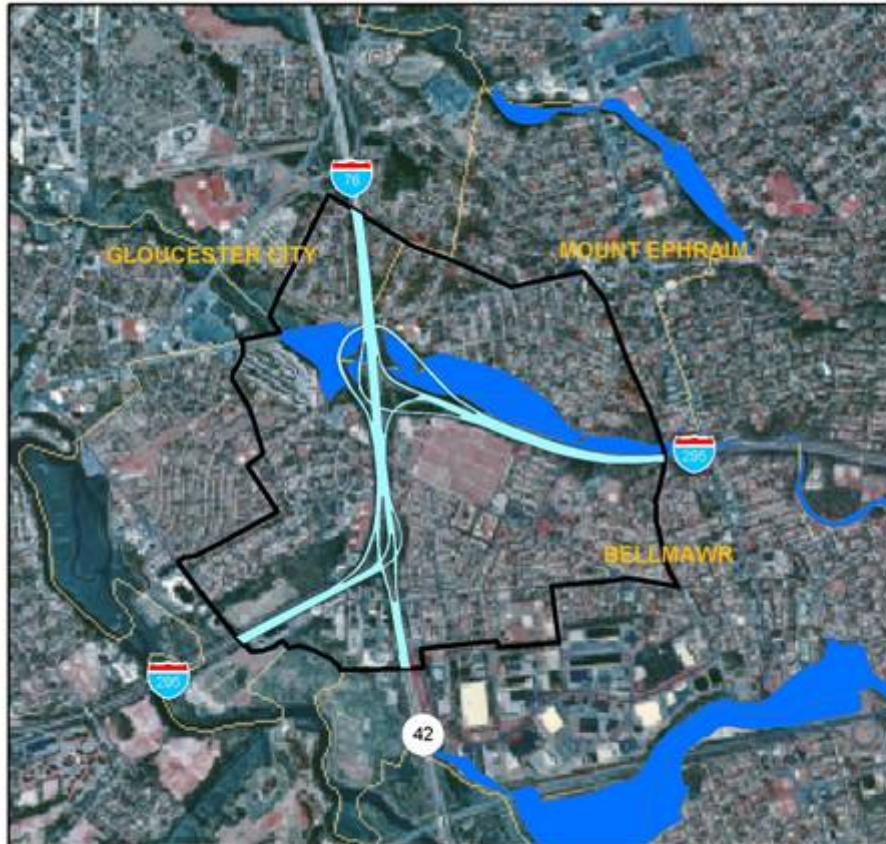


I-295/I-76/Route 42 Direct Connection

Camden and Gloucester Counties

www.state.nj.us/transportation/works/studies/rt295

FLOODPLAINS



Floodplains

Legend

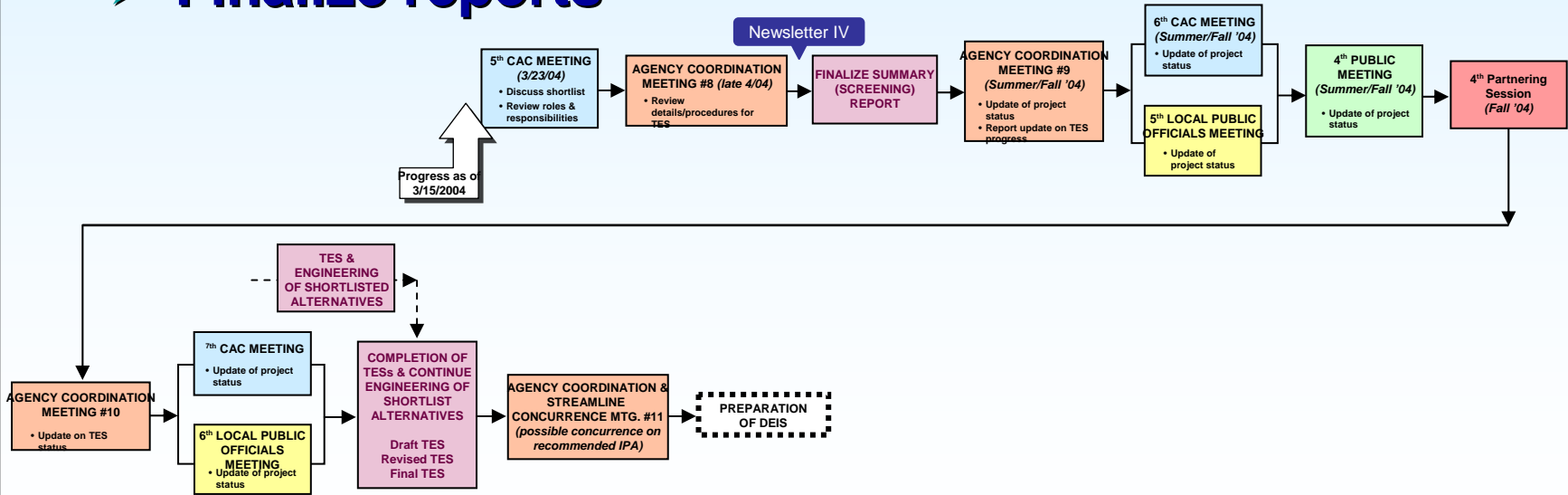
- Project Screening Study Area Boundary
- Municipal Boundary
- 100 Year Floodplain

0 1,000 2,000 3,000 4,000 Feet

Source: NJDEP Bureau of Geographic Information & Analysis, 1995-1997
Deborah Rubin Site Reconnaissance



- **Assess impacts**
- **Identify minimization/mitigation alternatives**
- **Obtain community input**
- **Address comments**
- **Finalize reports**





www.state.nj.us/transportation/works/studies/rt295

COMMUNITY ADVISORY COMMITTEE

Purpose:

- Gather input from community representatives
- Support the objectives of local communities with respect to economic development and quality of life issues
- Support local environmental, cultural and historic resources





COMMUNITY ADVISORY COMMITTEE (CONT'D)

www.state.nj.us/transportation/works/studies/rt295

Role:

- Reconcile the various community interests
- Assist NJDOT with formulating recommendations for transportation improvements
- Assist NJDOT in setting priorities and planning outreach activities
- Provide input on the outreach effort





COMMUNITY ADVISORY COMMITTEE (CONT'D)

www.state.nj.us/transportation/works/studies/rt295

Responsibilities:

- **Maintain open communication and respect for all viewpoints**
- **Review project information carefully and in a timely manner**
- **Help sponsor and/or take an active role in public meetings**





www.state.nj.us/transportation/works/studies/rt295

COMMUNITY ADVISORY COMMITTEE (CONT'D)

Responsibilities (cont'd):

- **Communicate local needs and concerns to NJDOT Project Team**
- **Communicate information on NJDOT plans and programs to the groups they represent and the general public**
- **Attend or have a designated representative attend each meeting**





www.state.nj.us/transportation/works/studies/rt295

MEETING SUMMARIES

- **Draft summaries will be distributed to CAC members**
- **Send comments to Dewberry**
- **Summaries of previous meetings will be approved at the beginning of the following meeting**
- **Summaries will be posted on the project website**





RESOURCE BOOKS

www.state.nj.us/transportation/works/studies/rt295

- **CAC Member List**
- **Project Team Contact List**
- **Draft Statement of Project Purpose and Need**
- **DEIS Flow Chart**
- **Study Area Map**
- **Project Newsletter**
- **CAC Meetings**



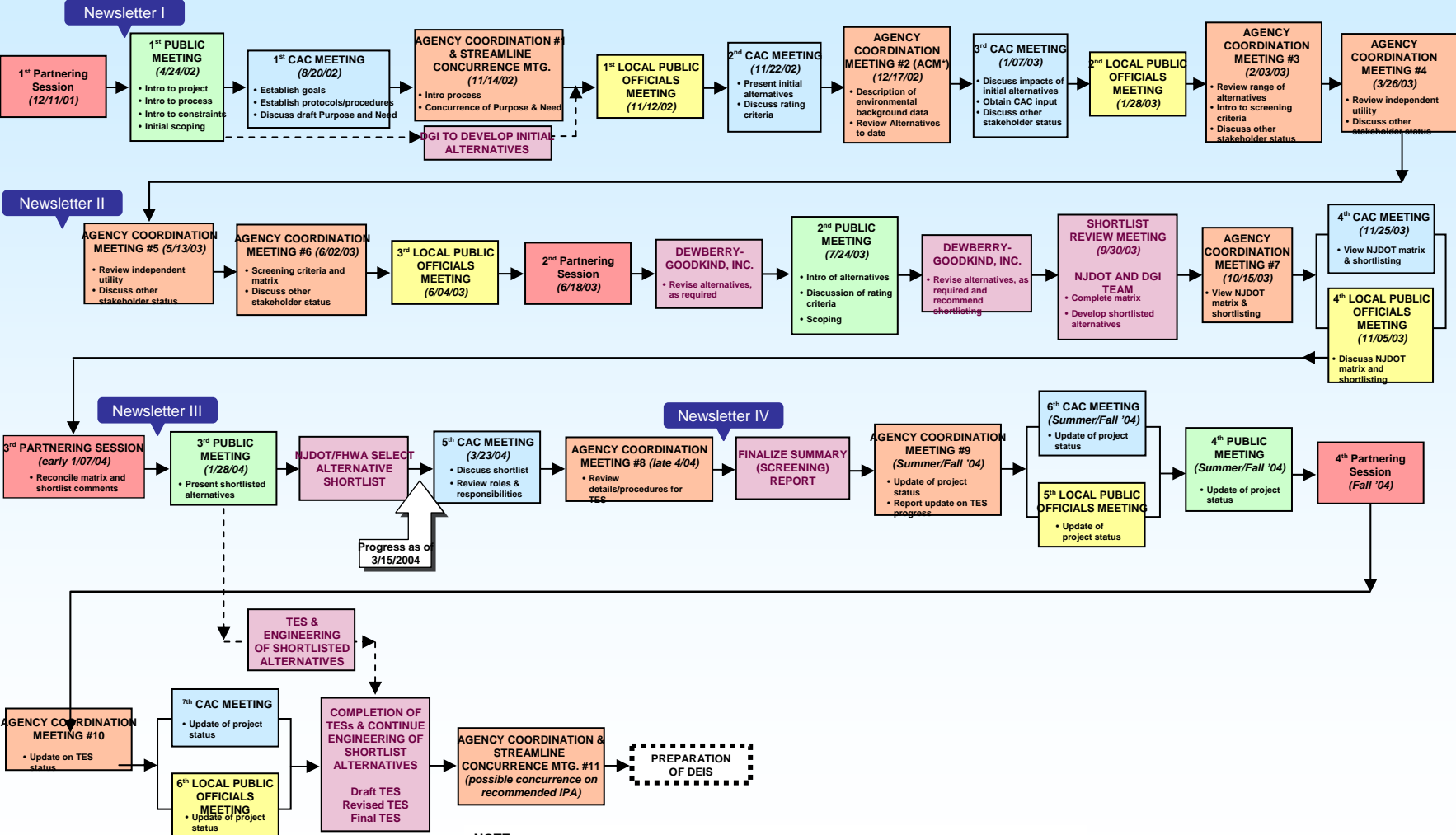
I-295/I-76/Route 42 Direct Connection

Camden and Gloucester Counties

PROJECT FLOW CHART

1st Public Meeting to Completion of TES's
Revised 3/15/04

www.state.nj.us/transportation/works/studies/rt295



NOTE

- Agency Coordination Meetings (ACM) will be added whenever necessary, throughout the process.
- Newsletter to be prepared quarterly
- PIC's to be held bi-annually.





www.state.nj.us/transportation/works/studies/rt295

WHAT CAN YOU DO?

- **Ask questions**
- **Give feedback**
- **Share your expertise/experiences**
- **Attend workshops, alternatives suggestions**
- **Visit the web site**
- **Talk to community members you represent**
- **Stay involved**

