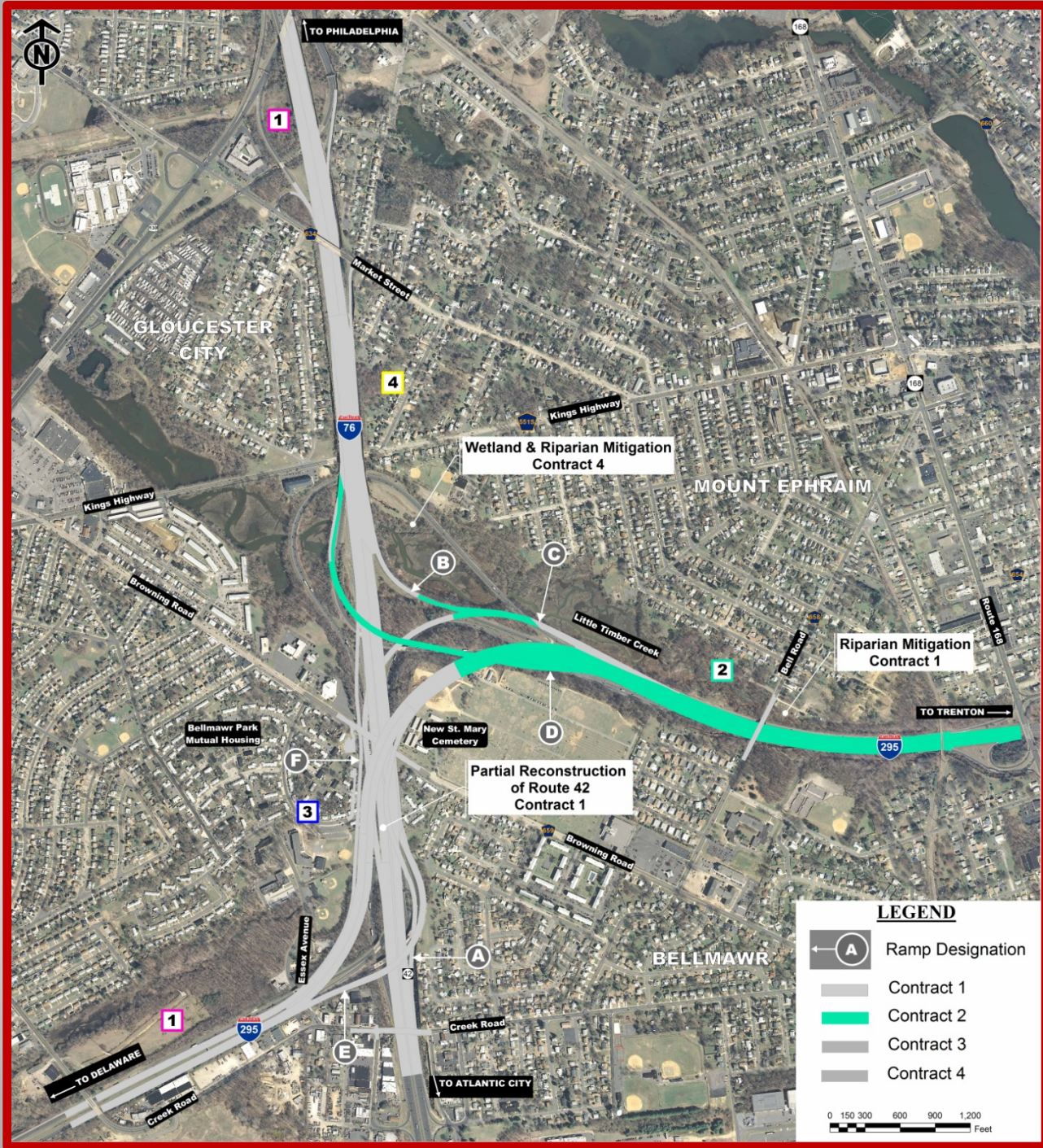


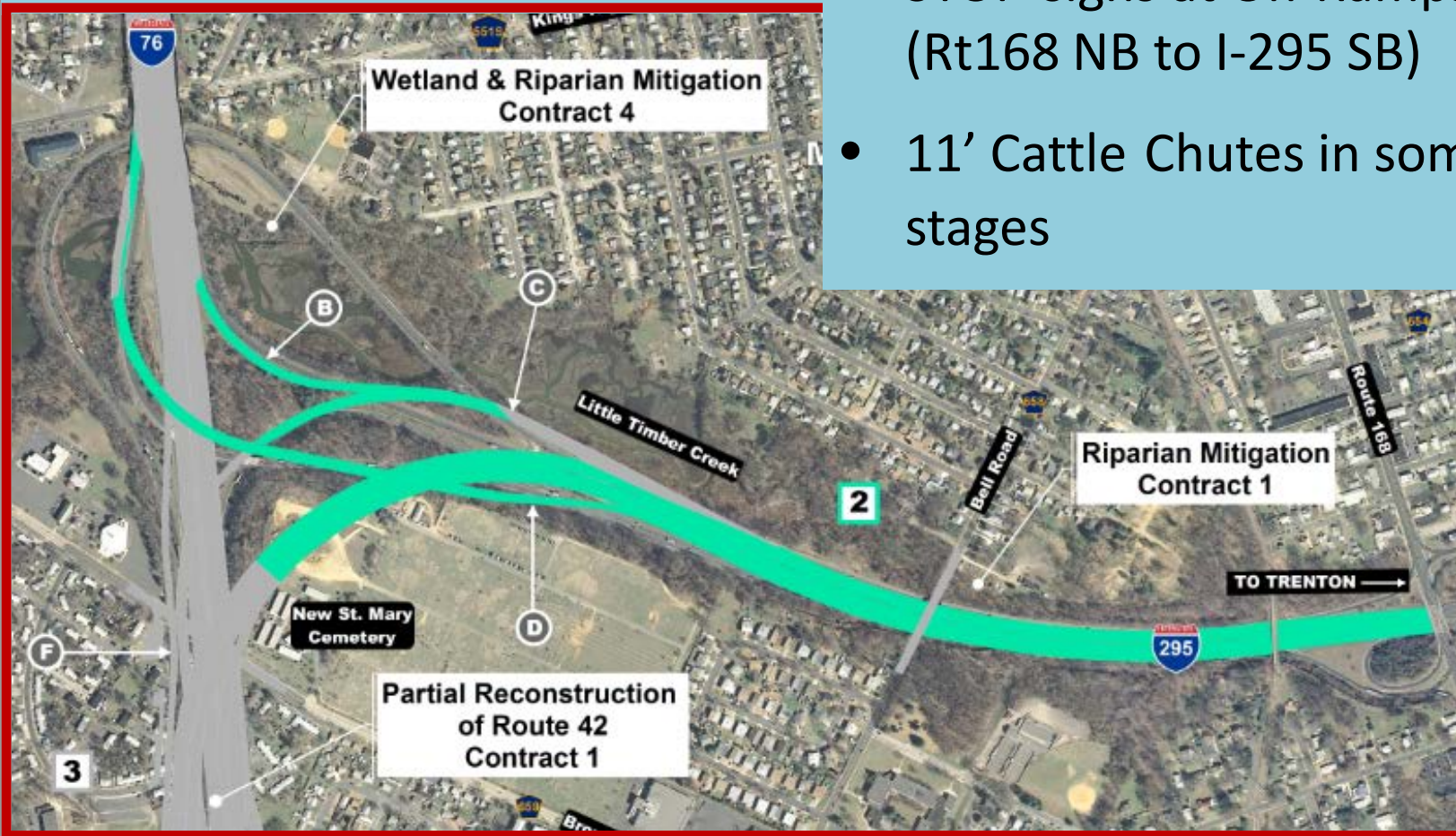
# Contract #2



# Contract #2

## ROUTE 168 INTERCHANGE

- Four Stages on both I-295 NB and SB
- STOP-signs at On-Ramps (Rt168 NB to I-295 SB)
- 11' Cattle Chutes in some stages



# Contract #2

## AL-JO'S CURVE TO BELL ROAD

- Proposed Roadway Higher and Narrow Median
- Numerous Shifts in Traffic
- Temporary Ramps Maintain Same Movements
- Cannot Maintain State Police U-Turn
- Ramp D Covered Roadway Opens

