

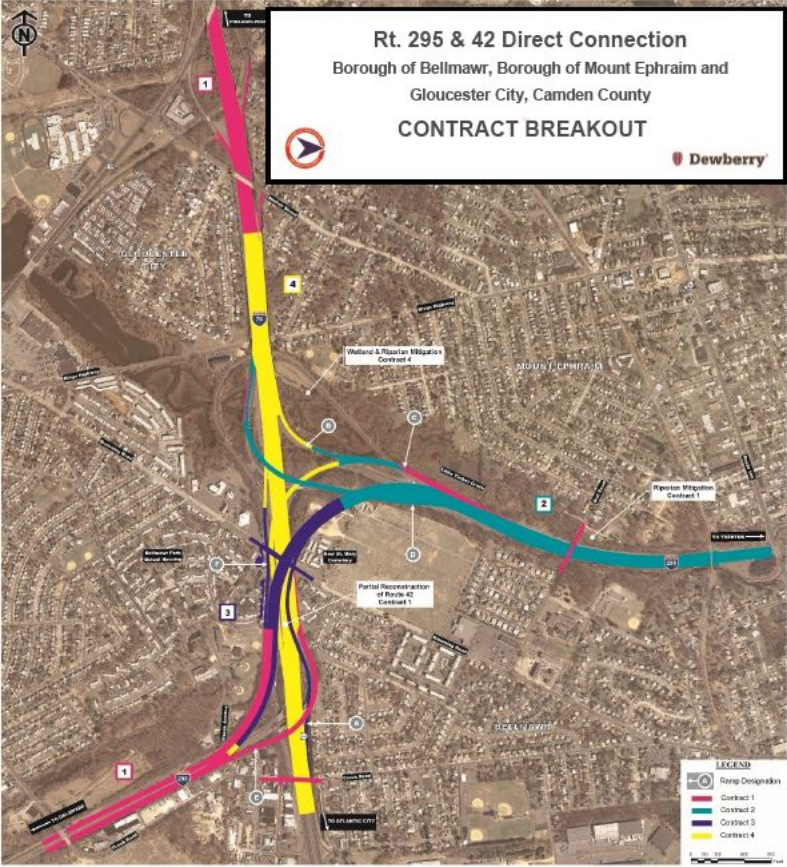
# Rt. 295 & 42 Direct Connection

Borough of Bellmawr, Borough of Mount Ephraim and  
Gloucester City, Camden County

## CONTRACT BREAKOUT



Dewberry



**LEGEND**

- Ramp Designation
- Contract 1
- Contract 2
- Contract 3
- Contract 4

0 100 200 400 Feet