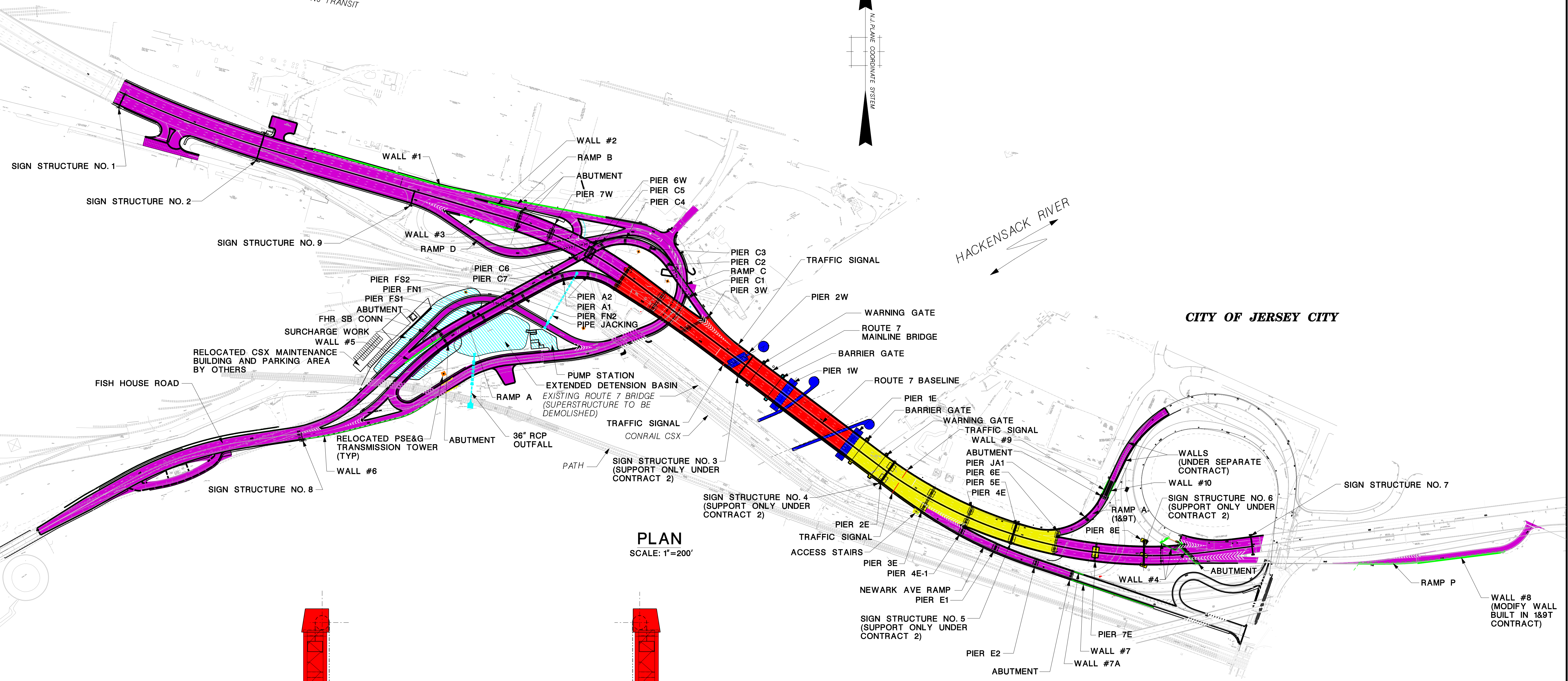


STATE	FEDERAL PROJECT NO.	SHEET	TOTAL SHEETS
N.J.	MG-RDM-7675 (110)		
STRUCTURE NO.		<b>0909-202</b>	
STRUCTURE NAME		ROUTE 7 OVER THE HACKENSACK RIVER WITTPENN BRIDGE	

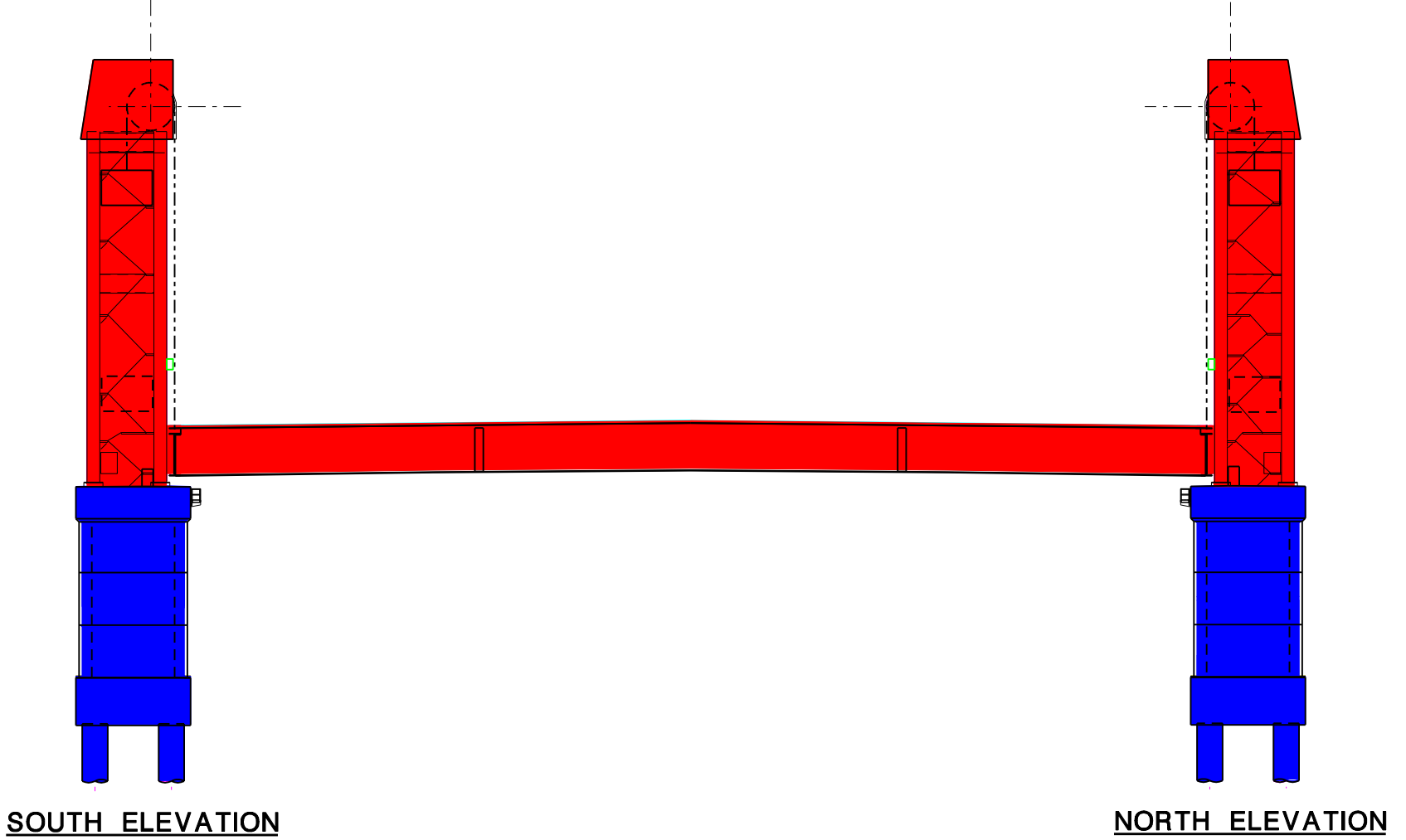
TOWN OF KEARNY

NJ TRANSIT

N.J. PLANE COORDINATE SYSTEM



PLAN  
SCALE: 1"=200'



LIFT SPAN ELEVATION

- Contract 1: River Work (Substructure Work Only)
- Contract 2: Jersey City Off-Line Work
- Contract 3: Lift Bridge Superstructure & Kearny Off-Line Work
- Contract 3A: Surcharge, Pump Station and Pipe Jacking
- Contract 4: On-Line Work (Retaining Walls Shown in Green)

200' 100' 0 200' 400'  
1"=200'

**NEW JERSEY DEPARTMENT OF TRANSPORTATION  
BUREAU OF STRUCTURAL ENGINEERING**

**ROUTE 7 OVER THE HACKENSACK RIVER  
WITTPENN BRIDGE**

**KEY PLAN TO STRUCTURES**

<b>ROUTE 7 CITY OF JERSEY CITY TOWN OF KEARNY</b>	<b>SECTION 2 HUDSON COUNTY</b>
JACOBS CIVIL INC.	DATE
MARCOS P. LOIZIAS, P.E. NJ P.E. LICENSE NO. 38410	BRIDGE SHEET NO. B- of B-110

CONTROL SECTION	JOB NO.
DESIGN BY	CHECK BY
DRAWN BY	CHECK BY
ESTIMATE BY	CHECK BY
SPECS BY	
IN CHARGE OF	

DWG. NO. 240-