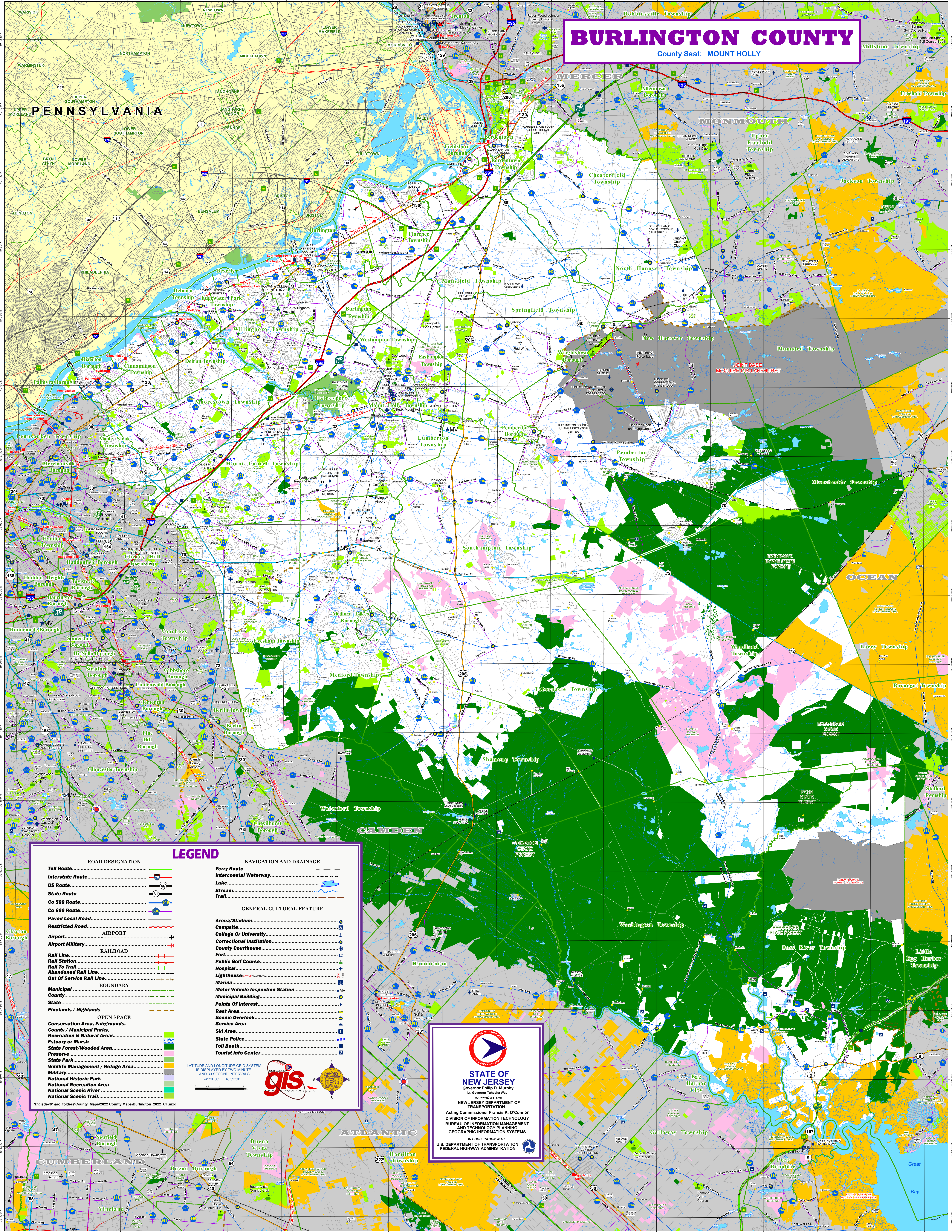


# BURLINGTON COUNTY

County Seat: MOUNT HOLLY



### LEGEND

ROAD DESIGNATION	NAVIGATION AND DRAINAGE
Toll Route	Ferry Route
Interstate Route	Intercoastal Waterway
US Route	Lake
State Route	Stream
Co 500 Route	Trail
Co 600 Route	
Paved Local Road	
Restricted Road	
AIRPORT	
Airport	
Airport Military	
RAILROAD	
Rail Line	
Rail Station	
Rail To Trail	
Abandoned Rail Line	
Out of Service Rail Line	
BOUNDARY	
Municipal	
County	
State	
Pinelands / Highlands	
OPEN SPACE	
Conservation Area, Fairgrounds, County / Municipal Parks, Recreation & Natural Areas, Estuary or Marsh, State Forest/Wooded Area, Preserve, State Park, Wildlife Management / Refuge Area, National Historic Park, National Recreation Area, National Scenic River, National Scenic Trail	
GENERAL CULTURAL FEATURE	
Arena/Stadium	
Campsite	
College Or University	
Correctional Institution	
County Courthouse	
Fort	
Public Golf Course	
Hospital	
Lighthouse	
Marina	
Motor Vehicle Inspection Station	
Municipal Building	
Points Of Interest	
Rest Area	
Scenic Overlook	
Service Area	
Ski Area	
State Police	
Toll Booth	
Tourist Info Center	

LATITUDE AND LONGITUDE GRID SYSTEM IS DISPLAYED BY TWO MINUTE AND 30 SECOND INTERVALS 76° 00' 00" - 76° 02' 30" W 40° 00' 00" - 40° 02' 30" N

gis

**STATE OF NEW JERSEY**  
 Governor Philip D. Murphy  
 Lt. Governor Tashia Way

MAPPING BY THE  
**NEW JERSEY DEPARTMENT OF TRANSPORTATION**

Acting Commissioner Francis K. O'Connor  
 DIVISION OF INFORMATION TECHNOLOGY  
 BUREAU OF INFORMATION MANAGEMENT  
 AND TECHNOLOGY PLANNING  
 GEOGRAPHIC INFORMATION SYSTEMS

IN COOPERATION WITH  
 U.S. DEPARTMENT OF TRANSPORTATION  
 FEDERAL HIGHWAY ADMINISTRATION