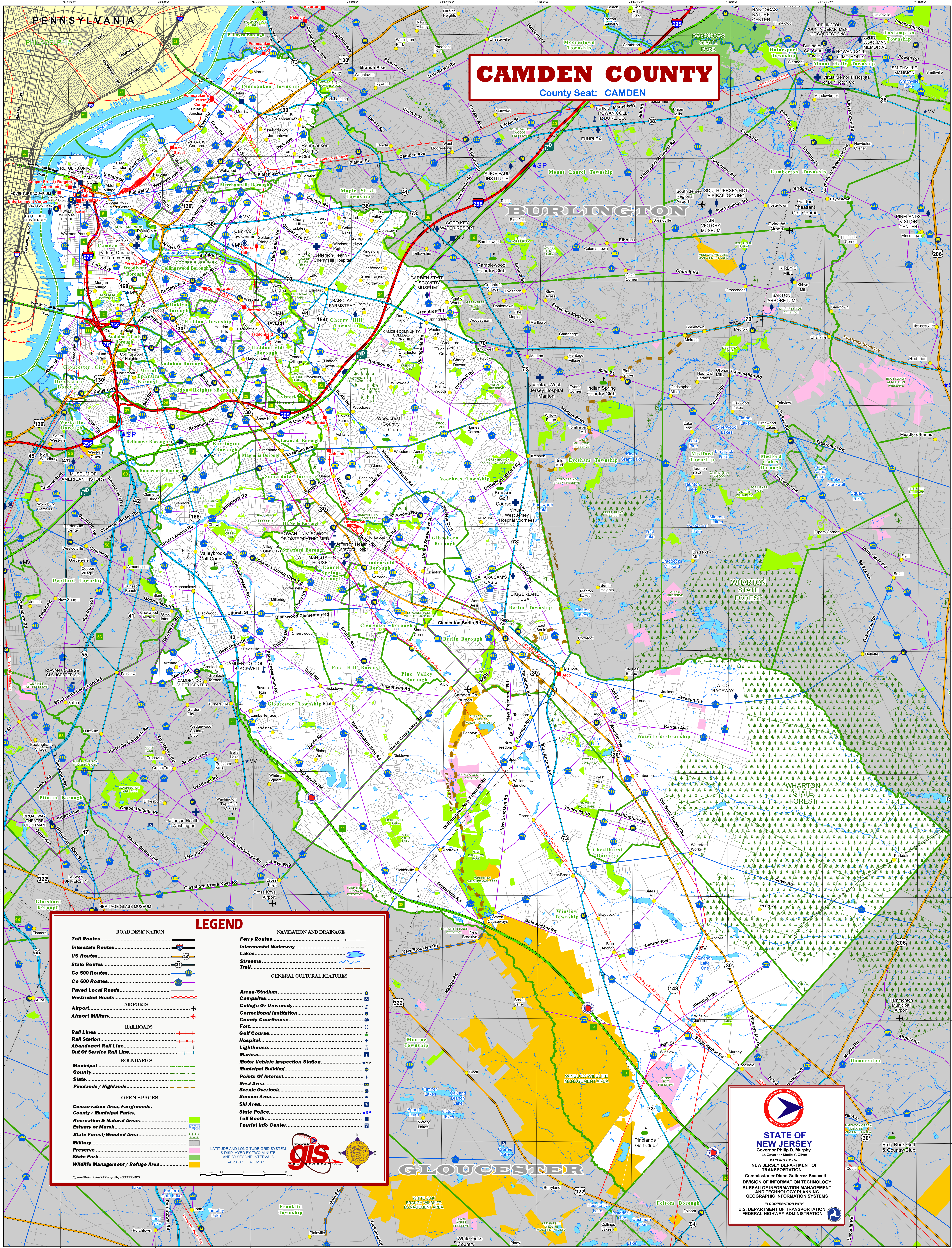


CAMDEN COUNTY

County Seat: CAMDEN



LEGEND

ROAD DESIGNATION

- Toll Routes**.....
- Interstate Routes**.....
- US Routes**.....
- State Routes**.....
- Co 500 Routes**.....
- Co 600 Routes**.....
- Paved Local Roads**.....
- Restricted Roads**.....
- AIRPORTS**
- Airport**.....
- Airport Military**.....
- RAILROADS**
- Rail Lines**.....
- Rail Station**.....
- Abandoned Rail Line**.....
- Out Of Service Rail Line**.....
- BOUNDARIES**
- Municipal**.....
- County**.....
- State**.....
- Pinelands / Highlands**.....
- OPEN SPACES**
- Conservation Area, Fairgrounds, County / Municipal Parks, Recreation & Natural Areas, Estuary or Marsh**.....
- State Forest/Wooded Area**.....
- Military**.....
- Preserve**.....
- State Park**.....
- Wildlife Management / Refuge Area**.....

NAVIGATION AND DRAINAGE

- Ferry Routes**.....
- Intercoastal Waterway**.....
- Lakes**.....
- Streams**.....
- Trail**.....
- GENERAL CULTURAL FEATURES**
- Arena/Stadium**.....
- Campsite**.....
- College Or University**.....
- Correctional Institution**.....
- County Courthouse**.....
- Fort**.....
- Golf Course**.....
- Hospital**.....
- Lighthouse**.....
- Marina**.....
- Motor Vehicle Inspection Station**.....
- Municipal Building**.....
- Points Of Interest**.....
- Rest Area**.....
- Scenic Overlook**.....
- Service Area**.....
- Ski Area**.....
- State Police**.....
- Toll Booth**.....
- Tourist Info Center**.....

LATITUDE AND LONGITUDE GRID SYSTEM IS DISPLAYED BY TWO MINUTE AND 30 SECOND INTERVALS 74° 20' 00" 40° 32' 30"

STATE OF NEW JERSEY
 Governor Philip D. Murphy
 Lt. Governor Sheila Y. Oliver

MAPPING BY THE
NEW JERSEY DEPARTMENT OF TRANSPORTATION
 Commissioner Diane Gutierrez-Scaccetti
 DIVISION OF INFORMATION TECHNOLOGY
 BUREAU OF INFORMATION MANAGEMENT
 AND TECHNOLOGY PLANNING
 GEOGRAPHIC INFORMATION SYSTEMS

IN COOPERATION WITH
 U.S. DEPARTMENT OF TRANSPORTATION
 FEDERAL HIGHWAY ADMINISTRATION

