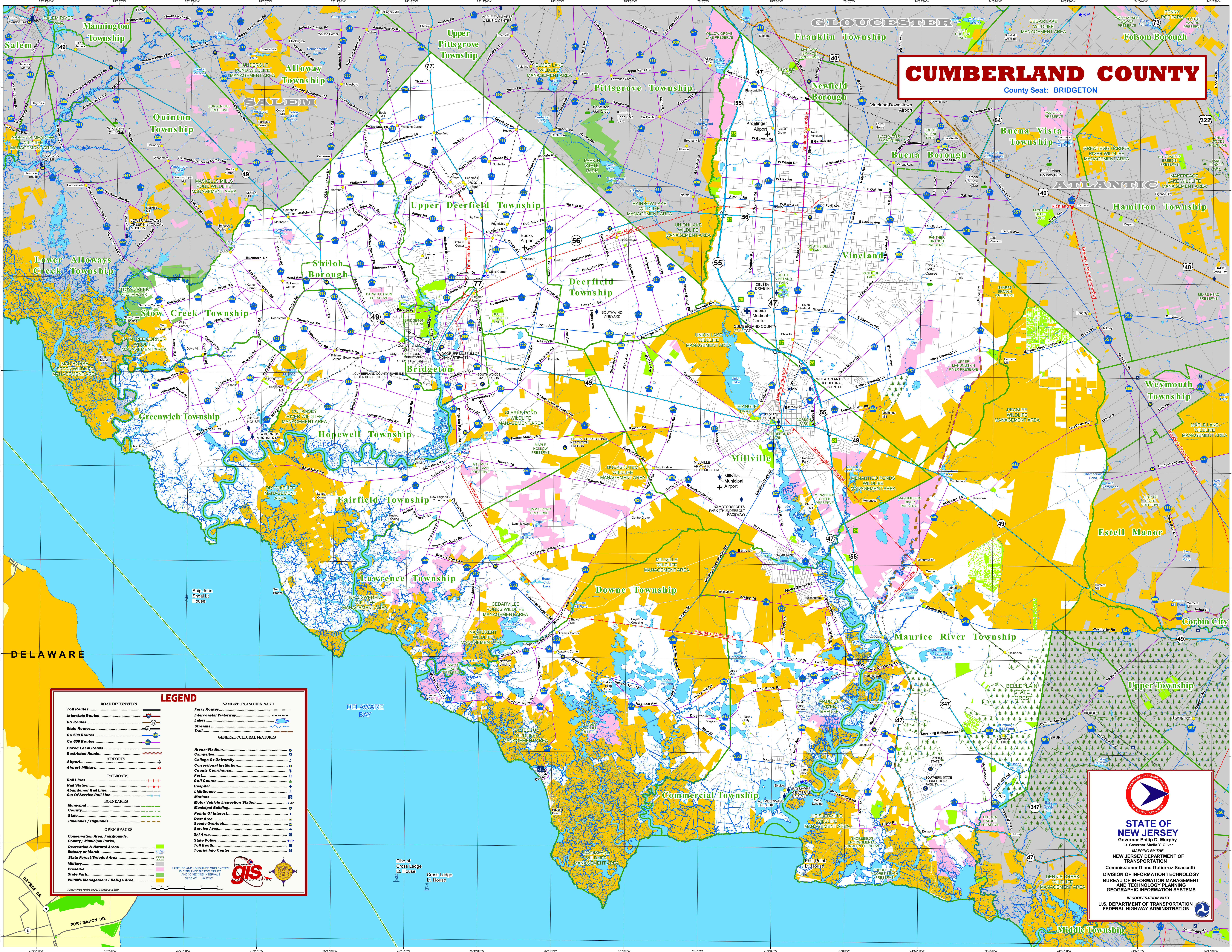


CUMBERLAND COUNTY

County Seat: BRIDGETON



LEGEND

<p>ROAD DESIGNATION</p> <p>Toll Routes</p> <p>Interstate Routes</p> <p>US Routes</p> <p>State Routes</p> <p>Co 500 Routes</p> <p>Co 600 Routes</p> <p>Paved Local Roads</p> <p>Restricted Roads</p> <p>Airports</p> <p>Airport Military</p> <p>Rail Lines</p> <p>Rail Station</p> <p>Abandoned Rail Line</p> <p>Out Of Service Rail Line</p> <p>BOUNDARIES</p> <p>Municipal</p> <p>County</p> <p>State</p> <p>Pinlands / Highlands</p> <p>OPEN SPACES</p> <p>Conservation Area, Fairgrounds, County / Municipal Parks, Recreation & Natural Areas, Estuary or Marsh</p> <p>State Forest/Wooded Area</p> <p>Military</p> <p>Preserve</p> <p>State Park</p> <p>Wildlife Management / Refuge Area</p>	<p>NAVIGATION AND DRAINAGE</p> <p>Ferry Routes</p> <p>Intercoastal Waterway</p> <p>Lakes</p> <p>Streams</p> <p>Trail</p> <p>GENERAL CULTURAL FEATURES</p> <p>Area/Stadium</p> <p>Campuses</p> <p>College Or University</p> <p>Correctional Institution</p> <p>County Courthouse</p> <p>Fort</p> <p>Golf Course</p> <p>Hospital</p> <p>Lighthouse</p> <p>Marinas</p> <p>Motor Vehicle Inspection Station</p> <p>Municipal Building</p> <p>Points Of Interest</p> <p>Rest Area</p> <p>Scenic Overlook</p> <p>Service Area</p> <p>Ski Area</p> <p>State Police</p> <p>Toll Booth</p> <p>Tourist Info Center</p>
---	--

LATTITUDE AND LONGITUDE GRID SYSTEM IS DISPLAYED BY TWO MINUTE AND 30 SECOND INTERVALS 74 30' W TO 74 30' W AND 39 00' N TO 39 00' N

© 2010 ESRI, 2009 ESRI, 2008 ESRI, 2007 ESRI, 2006 ESRI, 2005 ESRI, 2004 ESRI, 2003 ESRI, 2002 ESRI, 2001 ESRI, 2000 ESRI, 1999 ESRI, 1998 ESRI, 1997 ESRI, 1996 ESRI, 1995 ESRI, 1994 ESRI, 1993 ESRI, 1992 ESRI, 1991 ESRI, 1990 ESRI, 1989 ESRI, 1988 ESRI, 1987 ESRI, 1986 ESRI, 1985 ESRI, 1984 ESRI, 1983 ESRI, 1982 ESRI, 1981 ESRI, 1980 ESRI

STATE OF NEW JERSEY
 Governor Philip D. Murphy
 Lt. Governor Sheila Y. Oliver

NEW JERSEY DEPARTMENT OF TRANSPORTATION
 Commissioner Diane Gutierrez-Scaccetti

DIVISION OF INFORMATION TECHNOLOGY
 BUREAU OF INFORMATION MANAGEMENT
 AND TECHNOLOGY PLANNING
 GEOGRAPHIC INFORMATION SYSTEMS

IN COOPERATION WITH
 U.S. DEPARTMENT OF TRANSPORTATION
 FEDERAL HIGHWAY ADMINISTRATION