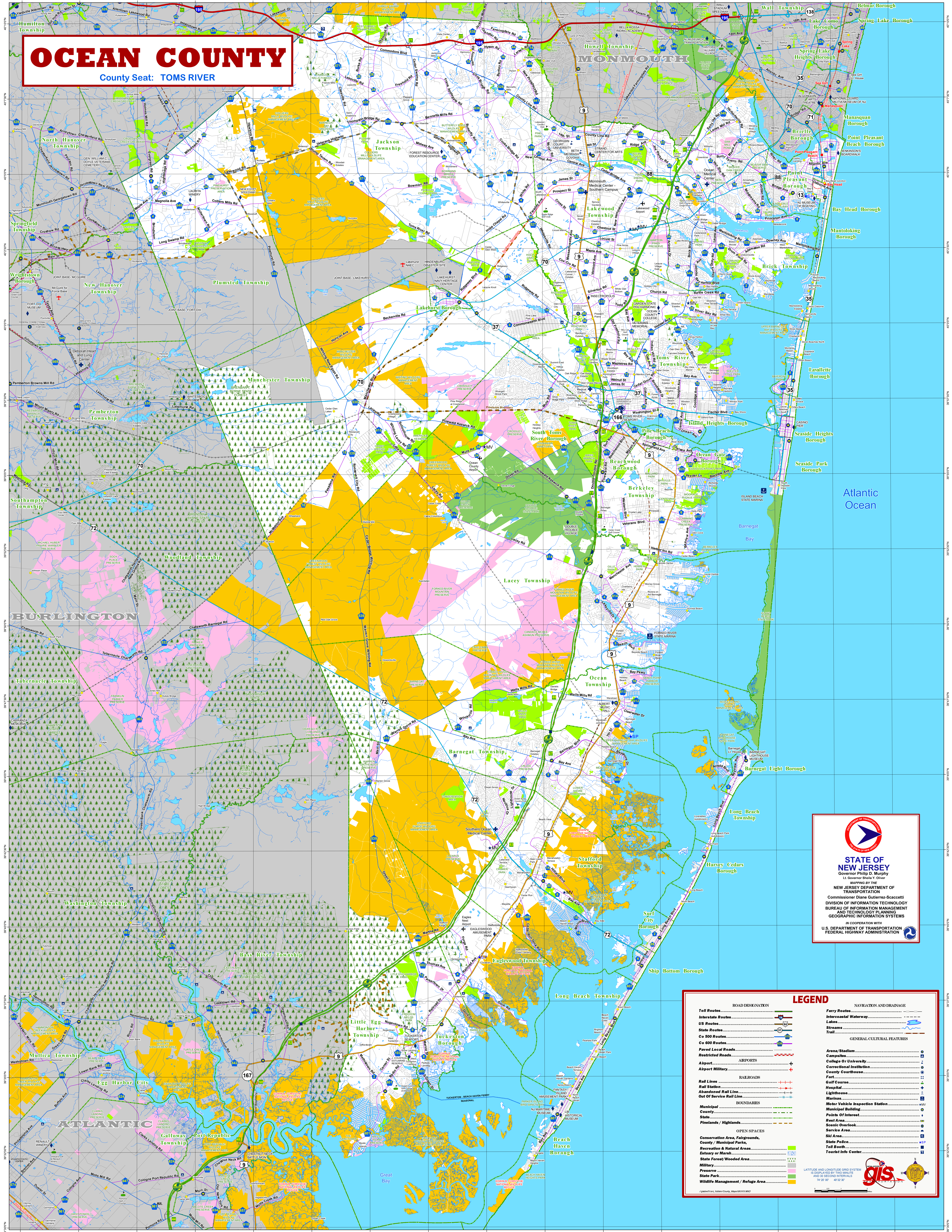
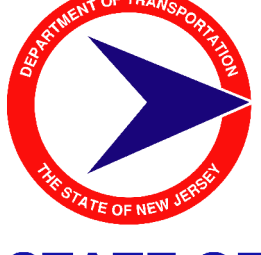


OCEAN COUNTY

County Seat: TOMS RIVER




STATE OF NEW JERSEY
Governor Philip D. Murphy
Lt. Governor Sherry Y. O'Neil

MAPPING BY THE
NEW JERSEY DEPARTMENT OF TRANSPORTATION
Commissioner Diane Gutierrez-Scaccetti
DIVISION OF INFORMATION TECHNOLOGY
BUREAU OF INFORMATION MANAGEMENT
AND TECHNOLOGY PLANNING
GEOGRAPHIC INFORMATION SYSTEMS

IN COOPERATION WITH
U.S. DEPARTMENT OF TRANSPORTATION
FEDERAL HIGHWAY ADMINISTRATION

LEGEND

ROAD DESIGNATION	NAVIGATION AND DRAINAGE
Toll Routes	Ferry Routes
Interstate Routes	Intercoastal Waterway
US Routes	Lakes
State Routes	Streams
Co 500 Routes	Trail
Co 600 Routes	GENERAL CULTURAL FEATURES
Paved Local Roads	Arena/Stadium
Restricted Roads	Campsite
Airport	College Or University
Airport Military	Correctional Institution
	County Courthouse
	Fort
	Golf Course
	Hospital
	Lighthouse
	Marina
	Motor Vehicle Inspection Station
	Municipal Building
	State
	Rest Area
	Scenic Overlook
	Service Area
	State Park
	State Police
	Toll Booth
	Tourist Info Center

BOUNDARIES

- Municipal
- County
- State
- Pinlands / Highlands

OPEN SPACES

- Conservation Area, Fairgrounds, County / Municipal Parks
- Recreation & Natural Areas
- Estuary or Marsh
- State Forest / Wooded Area
- Preserve
- State Park
- Wildlife Management / Refugia Area

RAILROADS

- Rail Lines
- Rail Station
- Abandoned Rail Line
- Out Of Service Rail Line

GENERAL CULTURAL FEATURES

- State Park
- Wildlife Management / Refugia Area

NAVIGATION AND DRAINAGE

- Ferry Routes
- Intercoastal Waterway
- Lakes
- Streams
- Trail

GENERAL CULTURAL FEATURES

- Arena/Stadium
- Campsite
- College Or University
- Correctional Institution
- County Courthouse
- Fort
- Golf Course
- Hospital
- Lighthouse
- Marina
- Motor Vehicle Inspection Station
- Municipal Building
- State
- Rest Area
- Scenic Overlook
- Service Area
- State Park
- State Police
- Toll Booth
- Tourist Info Center

LATITUDE AND LONGITUDE GRID SYSTEM IS DISPLAYED BY TWO MINUTE AND 30 SECOND INTERVALS
NAD 83 18° 42' 30"

