



NJDOT TRAFFIC ADVISORY

For Immediate Release:
December 30, 2024

Contact: Jim Barry
Steve Schapiro
609-963-1975

I-80 eastbound **REOPENED as emergency sinkhole repairs complete in Wharton, Morris County Crews did a remarkable job to reopen as soon as possible**

(Trenton) – I-80 eastbound **reopened at approximately 8 a.m. today, Monday, December 30** following the completion of emergency sinkhole repairs near mile post 34 in Wharton, Morris County.

NJDOT and contractor crews worked around the clock beginning on Thursday, December 26, and through the holiday weekend and inclement weather, to complete the extensive repair as quickly and safely as possible.

“I want to commend the outstanding efforts of the NJDOT and contractor crews that worked tirelessly to get Interstate 80 reopened quickly and safely for the motoring public,” Commissioner Fran O’Connor said. “Given the extensive nature of the damage, it is truly remarkable the amount of work that was done in such a short amount of time.”

Repairs included excavating and stabilizing the 40-foot by 40-foot sinkhole, before a full depth reconstruction of the roadway. To rebuild the road, crews installed a base of stone aggregate, wire mesh topped with more stone and a concrete layer. That was topped with additional fill and compacted before several layers of asphalt were put down to rebuild the road. In addition, the slope was reconstructed and guiderail repairs were completed.

Motorists are encouraged to check NJDOT’s traffic information website www.511nj.org for construction updates and real-time travel information. For NJDOT news follow us on X (Twitter) [@NewJerseyDOT](https://twitter.com/NewJerseyDOT), on the [NJDOT Facebook page](https://www.facebook.com/NJDOT), or Instagram [@NewJersey.DOT](https://www.instagram.com/NewJersey.DOT).

See photos below:

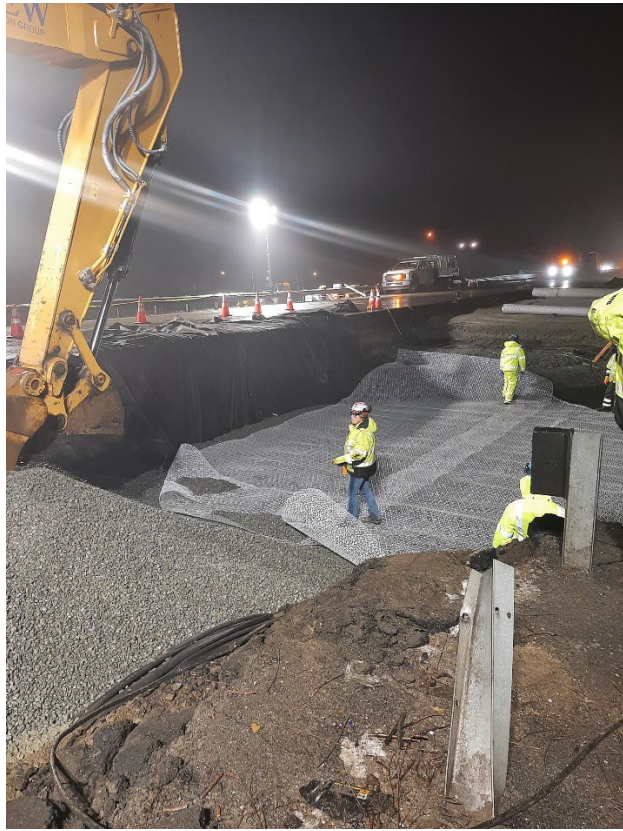
PHOTOS



Initial sinkhole



Installing wire mesh



Preparing concrete layer



Backfill and compaction



Newly paved roadway

###